

Gunma Manufacturing Division

As of March 31, 2013



Main Plant

Location	1-1, Subaru-cho, Ota City, Gunma Prefecture 373-8555
Site Area	585,521 m ²
Building Area	315,049m ²
Number of Employees	3,566
Main Products Manufactured	BRZ, IMPREZA models



Oizumi Plant

Location	1-1-1, Izumi, Oizumi-machi, Ora-gun, Gunma Prefecture 370-0531
Site Area	316,177m ²
Building Area	228,555m ²
Number of Employees	1,997
Main Products Manufactured	Automotive engines and transmissions



Yajima Plant

Location	1-1, Shoya-machi, Ota City, Gunma Prefecture 373-0822
Site Area	549,845m ²
Building Area	256,723m ²
Number of Employees	2,758
Main Products Manufactured	LEGACY, EXIGA, IMPREZA, and FORESTER models



Ota North Plant

Location	27-1, Kanayama-cho, Ota City, Gunma Prefecture 373-0027
Site Area	43,750m ²
Building Area	25,521m ²

Message from the Chief General Manager



Chief General Manager
Gunma Manufacturing Division
Corporate Senior Vice President

Masahiro Kasai

Based on the concept of building cars that prioritize safety and security, the active driving assist system, EyeSight (Ver.2), has now been installed in 100,000 vehicles. We believe that the support of so many users is testament to the system. At the Gunma Manufacturing Division, we not only produce cars that value SUBARU's distinctive technologies, but by participating as a corporate citizen in sports and local events, promote better relations with everyone in the local community. We would like to continue trustworthy business activities in the community, aiming to be a company with the ability to make people smile. SUBARU would like to call on your continued support for the future.

Relationship with Local Society

Communication with the Local Community

In order to contribute to creating a prosperous society in coexistence with local communities, the Gunma Manufacturing Division has been working with local residents, offering friendship and community exchange events, accepting plant tours, and participating in cleanup activities.



April: Ota Shibazakura (Moss Phlox) Festival

Subaru Community Exchange Association held a tent event, April 21--22, 2012, at the Shibazakura (moss phlox) Festival, which took place at Ota City North Sports Park. This was combined with active welfare fund-raising, and a sum 51,144 yen was received in donations. The collected funds will be contributed to the city's welfare facilities through the Ota City Social Welfare Conference.



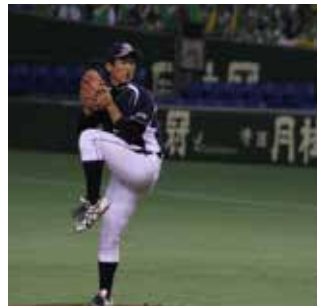
May: Kanayama Cleanup

Subaru Community Exchange Association sponsored a Kanayama Cleanup, which was held on May 26, 2012. A total of 950 volunteers (350 junior high school pupils among them) took part in mowing, rubbish collection and other cleanup activities in Kanayama, a symbol of Ota City. After the cleanup, participants were given flower seedlings to take home as souvenirs.



June: National Intercity Non-pro Baseball Tournament, North Kanto Qualifying Round

On June 11, 2012, the company's baseball team defeated Sumitomo Metal Kashima in the North Kanto Qualifying Round of the National Intercity Non-pro Baseball Tournament, making us undefeated in all three games played as representative of the North Kanto League. This is the second consecutive year (also the 24th time) the team has entered in the tournament. We thank you for all your valuable support.



July: Intercity Non-pro Baseball Tournament

The first game against Mitsubishi Heavy Industries, Kobe on July 16, 2012, ended in a struggle in extra time, but we ultimately prevailed and won the game. We had the support of large squad of fans who pulled out all the stops at the Tokyo Dome. We sincerely thank you all for your support.



August: Baseball Class by SUBARU Baseball Team

We sponsor the local youth baseball championship organized by Ota City. As part of the reward for winning the championship, our baseball team offers a baseball class to the children in the winning team to support their development.



September: 54th SUBARU Friendship Concert

On September 2, 2012, SUBARU Friendship Concert was held at Airys Hall, Nitta Cultural Center, Ota City. This concert featured the Ibaraki Oarai High School marching band, "BLUE-HAWKS." BLUE-HAWKS was awarded the highest prize at the 39th National Marching Band/Baton Twirling Contest, High School Students/Marching Band Division (middle sized). The event drew a large crowd.



October: SUBARU Appreciation Festival

The SUBARU Appreciation Festival was held at the Yajima Plant of Gunma Manufacturing Division on October 4, 2012. Based on the idea of fostering good relations between the plant and the region, this year the event attracted around 25,000 visitors, including family members of our staff, local area residents people, associated companies and more. The whole plant had a lively atmosphere as long lines formed at the various events, which included booths providing hands-on work experience for children (mechanics for kids) and a trial ride in an EyeSight equipped vehicle. Excited visitors were treated to events on the main stage that included a hip-hop dance, orchestra performance, song show and a big lottery.



November: Gunma High School Baseball Federation Baseball Class

The Gunma High School Baseball Federation held a baseball class. Altogether 177 students from 33 schools in Gunma prefecture took part. The company's baseball team members were invited as instructors to help improve the level of high school baseball in Gunma prefecture. The day of the class began with a warm-up at 9 AM, followed by a session of catch ball, a knock demonstration, training per position and so on; and despite the cold weather, the high school students paid keen attention to the guidance they were given.



December: Donation of Goods through the Ota City Social Welfare Conference

At every event held by the SUBARU Community Exchange Association, we ask visitors to donate their unused towels and soap. The towels and soap are then passed on to the welfare facilities in the area. We received a number thank-you letters from the facilities concerned.



January: Participating in the New Year Long Distance Relay Race

The SUBARU Track and Field Team ranked 6th (4 hr 55 min 30 sec) in the New Year Long Distance Relay Race held on January 1, 2013, winning the prize they'd sought since the Team was established in 1998. This is the Track and Field Team's 13th consecutive year to enter the event, and the team was able to fulfill the long-held ambition of winning a prize. We would like to thank spectators for your great support, both roadside and those who viewed the event on television.



February: Spreading Flowers through the SUBARU Community Exchange Association

In collaboration with local businesses the SUBARU Community Exchange Association offers flowers seedlings to its members at discount prices three times a year. This is our effort to fill the area with flowers!



March: 2nd Talk by Rakugo Master, Danshiro Tatekawa

The SUBARU Community Exchange Association for the second time invited Mr. Danshiro Tatekawa, a Rakugo artist born in Gunma to put on a show. In the first half of the show Mr. Tatekawa gave us a general talk, and then presented his Rakugo (humorous talk). Visitors enjoyed the show so much that we have decided to make it an annual event on the calendar.

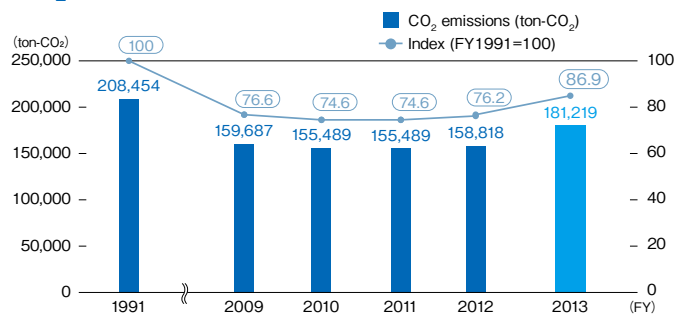
Approaches to Environmental Preservation

Gunma Manufacturing Division, as an automobile manufacturer, works actively for environmental protection activities to realize a "Greener SUBARU" through its "Clean Factories."

Approach to Prevention of Global Warming

In FY2013, our CO₂ emissions volume was 181,219 ton-CO₂; 86.9% compared to FY1991. We shall continue our efforts to save energy and contribute to the prevention of global warming.

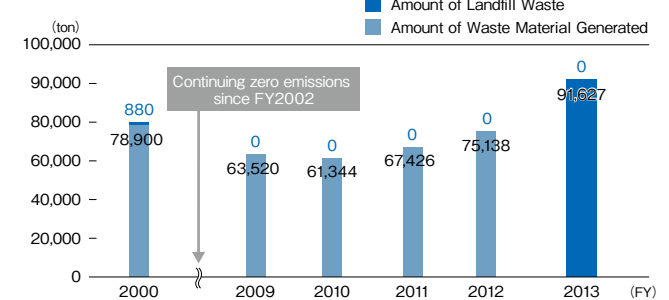
CO₂ emissions



Approach to Zero Emissions

The waste emissions volume of Gunma Manufacturing Division in FY2013 was 91,627 ton. Our record of zero ton landfill waste has continued uninterrupted since FY2002. We shall continue with our efforts to improve recycling and further reduce waste.

Amount of Waste Material Generated and Landfill Waste



Approach to Pollution Prevention

To live together with local communities and to maintain a verdant natural environment, we manage exhaust emissions as well as wastewater discharge to reduce environmental risks, and promote activities to prevent environmental accidents and public hazards. We will strive, not only to ensure that we do not exceed the standard limits, but rather with the aim of attaining our own "zero" targets.

FY2013 Environmental Data

Water Quality Data

The measured results all comply with the Water Quality Pollution Control Act, the Gunma Prefectural Ordinance, and the Pollution Prevention Agreement with Ota-Oizumi. They also meet our voluntary standards* which are 20% stricter than the levels under the agreement and ordinances.

* FHI established the voluntary standards (for air, water, and vibration), which are 20% stricter than environmental laws and regulations.

Main Plant: Water Pollution Control Law, Gunma Prefectural Ordinances

Substance	Regulated Values (prefectural)	Voluntary Standard	Maximum Values	Minimum Values	Average Values
pH	5.8~8.6	6.1~8.3	7.5	7.0	7.3
BOD	25	20	4.5	2.4	3.5
SS	50	40	6.4	1.7	3.2
n-Hexane Extracts (inorganic)	5	4	1	under 0.1	0.4
Fluorine	8	6.4	2.2	0.3	1.3
n-Hexane Extracts (organic)	30	24	under 1.0	under 1.0	under 1.0
Zinc	2	1.6	0.2	under 0.1	under 0.1
Soluble Iron	10	8	under 0.1	under 0.1	under 0.1
Soluble Manganese	10	8	under 0.1	under 0.1	under 0.1
Total Phosphorus	16(8)	6.4	2.1	0.3	1.2
Total Nitrogen	120(60)	48	3.5	2.4	3.0

Yajima Plant: Water Pollution Control Law, Gunma Prefectural Ordinances

Substance	Regulated Values (prefectural)	Voluntary Standard	Maximum Values	Minimum Values	Average Values
pH	5.8~8.6	6.1~8.3	7.4	6.9	7.2
BOD	25	20	11.4	1.9	6.3
SS	50	40	4.2	1.1	2.8
n-Hexane Extracts (inorganic)	5	4	3.6	0.5	1.8
Fluorine	8	6.4	1.5	1.5	1.5
n-Hexane Extracts (organic)	30	24	under 1.0	under 1.0	under 1.0
Zinc	5	4	0.5	0.2	0.3
Soluble Iron	10	8	under 0.1	under 0.1	under 0.1
Soluble Manganese	10	8	0.8	0.3	0.6
Total Phosphorus	16(8)	6.4	0.4	0.2	0.3
Total Nitrogen	120(60)	48	6.4	4.4	5.4

Oizumi Plant: Water Pollution Control Law, Pollution Control Agreement with Oizumi City

Substance	Regulated Values (prefectural)	Voluntary Standard	Maximum Values	Minimum Values	Average Values
pH	5.8~8.6	6.1~8.3	7.5	6.9	7.3
BOD	10	8	6.2	1	2.7
SS	10	8	6	2.3	4
n-Hexane Extracts (inorganic)	3	2.4	0.5	under 0.1	0.2
Fluorine	8	6.4	under 0.2	under 0.2	under 0.2
n-Hexane Extracts (organic)	30	24	under 1.0	under 1.0	under 1.0
Zinc	2	1.6	under 0.1	under 0.1	under 0.1
Soluble Iron	5	4	under 0.1	under 0.1	under 0.1
Soluble Manganese	5	4	under 0.1	under 0.1	under 0.1
Total Phosphorus	16(8)	6.4	0.5	0.4	0.5
Total Nitrogen	120(60)	48	5.5	5	5.3

North Plant: Water Pollution Control Law, Gunma Prefectural Ordinances

Substance	Regulated Values (prefectural)	Voluntary Standard	Maximum Values	Minimum Values	Average Values
pH	5.8~8.6	6.1~8.3	8.1	7.5	7.8
BOD	25	20	1	under 0.1	0.6
SS	50	40	4	1.1	2.7
n-Hexane Extracts (inorganic)	5	4	under 1.0	under 1.0	under 1.0
Fluorine	8	6.4	under 0.2	under 0.2	under 0.2
n-Hexane Extracts (organic)	30	24	under 1.0	under 1.0	under 1.0
Zinc	5	4	under 0.1	under 0.1	under 0.1
Soluble Iron	10	8	0.1	0.1	0.1
Soluble Manganese	10	8	0.1	0.1	0.1
Total Phosphorus	16(8)	6.4	0.1	0.1	0.1
Total Nitrogen	120(60)	48	2.2	1.4	1.8

[Notations] pH: Hydrogen-ion concentration, BOD: Biochemical oxygen demand, SS: Concentration of suspended solids in water (diameter: 2 mm or smaller)
[Units] Bacillus coli: number/ml, all others except pH: mg/L, regulated values for Total Phosphorus and Total Nitrogen are daily average value.

Air Pollution Data

The measured results all comply with the Air Pollution Control Act, and they were also less than our voluntary standards, which is 20% stricter than Law.

Main Plant: Air Pollution Data (Air Pollution Control Law)

Facilities	Substance	Regulated Values	Voluntary Standard	Maximum Values	Average Values
Boilers (No. 5 & No. 6)	NOx	150	120	85	81
	SOx	60.3	48.2	0.22	0.1
	PM	0.25	0.2	0.003	0.003
Dry-off Furnace (Electro coat, 2nd & final coat)	NOx	230	184	49	40
	PM	0.2, 0.3	0.16, 0.24	0.004	0.003

[Unit] NOx: ppm, SOx: m³N/h, PM: g/m³N
Among the 33 facilities specified by Law, we present here data of big boilers and dry-off furnaces. Also at the specified facilities not indicated here, measured values were in the range of values specified by Law.

Yajima Plant: Air Pollution Data (Air Pollution Control Law)

Facilities	Substance	Regulated Values	Voluntary Standard	Maximum Values	Average Values
Boiler (No. 2)	NOx	230	180	90	90
	SOx	62	50	0.5	0.5
	PM	0.25	0.2	0.006	0.006
Co-generation System (Gas engine No.1 & 2)	NOx	600	480	268	147
	PM	0.05	0.04	0.003	0.002
Dry-off Furnace (Electro coat, 2nd & final coat, PP)	NOx	230	184	62	38
	PM	0.2, 0.35	0.16, 0.28	0.003	0.002

[Unit] NOx: ppm, SOx: m³N/h, PM: g/m³N
Among the 20 facilities specified by Law, we present here data of big boilers, co-generation system and dry-off furnaces. Also at the specified facilities not indicated here, measured values were in the range of values specified by Law.

Oizumi Plant: Air Pollution Data (Air Pollution Control Law)

Facilities	Substance	Regulated Values	Voluntary Standard	Maximum Values	Average Values
Co-generation System (Gas engine No.1 & 2)	NOx	600	480	270	243
	PM	0.05	0.04	0.003	0.002
Aluminum Melting Furnace	NOx	180	144	75	243
	PM	0.2	0.16	0.03	0.002

[Unit] NOx: ppm, PM: g/m³N
Among the 12 facilities specified by Law, we present here data of melting furnace and co-generation system. Also at the specified facilities not indicated here, measured values were in the range of values specified by Law.

About others, the measured values observe the voluntary standard.

Measurement Result of Noise and Vibration

The measured results all comply with the Noise and Vibration Act, and they were also less than our voluntary standards, which is 20% stricter than Law.

Noise

Gunma Prefectural Ordinances, Pollution Control Agreement with Oizumi City

[Unit] dB(A)

Measurement Area	Regulated Values (night)	Voluntary Standard	Number of Measurements	Actual Values
Main Plant	55	54	20	38~52
Yajima Plant	55	54	20	42~54
Oizumi Plant	50	49	13	38~48

Vibration

Gunma Prefectural Ordinances, Pollution Control Agreement with Oizumi City

[Unit] dB(Z)

Measurement Area	Regulated Values (night)	Voluntary Standard	Number of Measurements	Actual Values
Main Plant	65	64	20	12.9~28.7
Yajima Plant	65	64	20	15.2~33.9
Oizumi Plant	60	59	13	24.4~29.5

VOC Measurement Result of Paint Facilities

We took measurements at all 12 facilities. All the measured results were less than our voluntary standards.

VOC Measurement Result

[Unit: ppm-C]

Facilities		Regulated Values	Maximum Values	Average Values
Paint Facilities, etc	Main Plant	700	545	50
	Yajima Plant	700	693	138
	Oizumi Plant	400	278	93

Measurement Result of Odor

We took measurements at 7 boundary locations at Main Plant, 7 locations at Yajima Plant and 4 locations at Oizumi Plant for a total of 18 boundary locations. All the measured results were less than 10 for odor concentration and odor index, meeting 21 requirements.

Main Plant, Yajima Plant, Oizumi Plant: Offensive Odor Control Law

[Unit: ppm]

Measurement Area	Regulated Values	Voluntary Standard	Number of Measurements	Actual Values
Main Plant	21	20	7	under 10
Yajima Plant	21	20	7	under 10
Oizumi Plant	21	20	4	under 10

Amount of PRTR chemical substances handled and emitted

Gunma Manufacturing Division (Main Plant, Yajima Plant, Oizumi Plant, North Plant)

[Unit: kg/year]

Chemical Substances	Amount Handled	Air Release	Water Emissions(public)	Transfer (sewer)	Transfer	Consumption	Solvent Wiping Removal	Recycle
Ethyl Benzene	457.152	240,266	0	0	0	55,379	31,779	129,728
Xylene	1,006,942	555,408	0	0	0	251,909	96,755	102,870
2-Ethoxyethyl acetate	1,063	43	11	0	20	542	445	2
1,3,5-Trimethylbenzene	44,713	27,359	0	0	0	5,405	5,296	6,653
Toluene	1,267,424	465,400	0	0	0	665,195	88,565	48,264
2-Ethylhexyl	8,595	0	0	0	480	8,115	0	0
1,2,4-Trimethylbenzene	133,753	449	6	0	0	133,298	0	0
Benzene	22,642	69	0	0	0	22,573	0	0
Naphthalene	6,347	4,732	0	0	0	0	1,615	0
Formaldehyde	35,357	34,161	0	0	0	0	55	1,141
n-hexane	85,322	290	0	0	0	85,032	0	0
Zinc compounds (water-soluble)	82,681	0	676	0	41,860	40,145	0	0
Nickel compounds	2,783	0	122	0	2,115	546	0	0
Hydrogen fluoride and its water-soluble salts	2,852	0	856	0	1,996	0	0	0
Manganese and its compounds	3,848	0	83	0	1,513	2,252	0	0
Dioxin	0	0	0	0	0	0	0	0
Total	3,161,474	1,328,177	1,754	0	47,984	1,270,391	224,510	288,658
		1,329,931						

Division History

December 1917 The Research Aircraft Laboratory moved to Ota-Town, Gunma Prefecture
November 1934 New Ota Plant completed and old Ota Plant renamed as Donryu Plant
August 1945 Nakajima Aircraft Company renamed Fuji Sangyo Company, Ltd.
July 1953 Fuji Heavy Industries Ltd. established
April 1955 Ota North Plant and Isesaki Plant opened
March 1958 The SUBARU 360, 4-wheeled mini car, announced
October 1960 Gunma Main Plant opened

November 1964 Test track at Gunma Main Plant completed
February 1969 Yajima Plant started operation
February 1983 Oizumi Plant opened and started full-fledged operation
May 1987 SUBARU Test & Development Center conducted
March 1999 Gunma Manufacturing Division acquired ISO 14001 certification
March 2001 Gunma Manufacturing Division achieved zero emissions
January 2010 Fuji Heavy Industries Ltd. acquired integrated ISO 14001 certification

Contact General Affairs Sec.

General Administration Dept. Gunma Manufacturing Division

TEL: 0276-26-2011 [Domestic] +81-276-26-2001 [International] FAX: 0276-26-3020 [Domestic] +81-276-26-3020 [International]