



SERVICE BULLETIN

FUJI HEAVY INDUSTRIES LTD.

HEAD OFFICE

: SUBARU BLDG,
SHINJUKU, TOKYO, JAPAN

NO : FAS-047

DATE : March 15, 1971

1. SUBJECT : Addition of ICS installation.
2. AIRCRAFT AFFECTED : FA-200 Series serial Nos. 1 thru 101.
3. PRIORITY : Optional.
4. REASON : In order to facilitate cabin interphone.
5. DESCRIPTION : ICS AMP and relays to be installed behind instrument panel, under glove box, and press-to-talk switches attached on control wheels, with related electric system of wiring installed.
6. ACCOMPLISHMENT : Optional.
7. APPROVAL : JCAB Approved.
8. PARTS REQUIRED : The following parts are required to perform the modification.

PART NO.	PART NAME	QTY
F-0315-070010	INSUL. TUBE	6
F-0315-090010	"	7 ADDITIONAL 4 REQD WHEN REAR SEAT JACK USED
F-0315-120010	"	16
F-0315-140010	"	2

FAS - 047

PAGE 1 OF 10

8. PARTS REQUIRED : (cont.)

PART NO.	PART NAME	QTY
B-3	FUSE HOLDER	1
FO6G5R00A	FUSE	1
MIL-T-713 TYPES CLASS I	TWINE	AR
FED-QQ-S-571 Sn60	SOLDER	AR
MIL-W-16878 C TYPE B MIL-C-7078 TYPE II	WIRE	AR
320559	SPLICE	2
200-344230-3	DOUBLER	REQD ONLY WHEN REAR SEAT JACK USED
200-344226-001	PLACARD	1
200-344225-001	PLACARD	1
200-344231-001	BRACKET ASSY	1
200-383400-001	ICS AMP	1
200-383401-001	RELAY	2
BCW-10-F	HEAD SET	2
JJ-033	JACK	2
PT-102	SWITCH	2
MS35059-23	SWITCH	2
MS35123-1-2	TERMINAL BLOCK	1
MS35206-217	SCREW	4
MS35206-218	"	2
MS35206-229	"	4
MS35206-230	"	8

8. PARTS REQUIRED : (cont.)

PART NO.	PART NAME	QTY
MS35206-244	SCREW	2
MS35206-245	"	7 ADDITIONAL 2 REQD WHEN REAR SEAT JACK USED
MS35206-246	"	7
MS21919DG2	CLAMP	4
MS21919DG4	"	2
MS21919DG12	"	2
NAS679A04W	NUT	2
NAS679A06W	"	6
NAS679A08W	"	12 ADDITIONAL 2 REQD WHEN REAR SEAT JACK USED
NAS679A06	NUT PLATE	8
AN960D4	WASHER	6
AN960D6	"	10
AN960D8	"	34 ADDITIONAL 4 REQD WHEN REAR SEAT JACK USED
AN935-8	"	1 ADDITIONAL 2 REQD WHEN REAR SEAT JACK USED
AN960-8	"	1 ADDITIONAL 2 REQD WHEN REAR SEAT JACK USED
MS20470AD3	RIVET	16
FVD 1.25-M3	TERMINAL	17
FVD 1.25-4	"	4 ADDITIONAL 2 REQD WHEN REAR SEAT JACK USED
32445	DISCONNECT SPLICE	2
200-324146-031	PLACARD	1 REQD ONLY WHEN REAR SEAT JACK USED

8. PARTS REQUIRED : (cont.)

PART NO.	PART NAME	QTY
JJ-034	JACK	2 REQD ONLY WHEN REAR SEAT JACK USED
A1789-8Z-1	SPEED NUT	2 REQD ONLY WHEN REAR SEAT JACK USED
MS35489-1S	GROMMET	2 REQD ONLY WHEN REAR SEAT JACK USED
MS24621-30	SCREW	2 REQD ONLY WHEN REAR SEAT JACK USED
111505	CLAMP	6 REQD ONLY WHEN REAR SEAT JACK USED

WIRE NO.	GAGE	LENGTH
RZ18A20	20	3000 REQD ONLY WHEN REAR SEAT JACK USED
RZ19A20N	"	150 REQD ONLY WHEN REAR SEAT JACK USED
RZ14B20	"	3000 REQD ONLY WHEN REAR SEAT JACK USED
RZ17A20N	"	150 REQD ONLY WHEN REAR SEAT JACK USED
RZ1A20	"	1900
RZ1B20	"	1900
RZ1C20	"	150
RZ3A20	"	1800
RZ4A20	"	150
RZ5A20	"	1800
RZ6A20N	"	800
RZ7A20	"	1700
RZ8A20	"	800

8. PARTS REQUIRED : (cont.)

WIRE NO.	GAGE	LENGTH
RZ9A20	20	150
RZ9B20	"	1900
RZ10A20	"	150
RZ11A20	"	1900
RZ12A20	"	1300
RZ13A20	"	1300
RZ14A20	"	1500
RZ15B20N	"	860
RZ18B20	"	2000
RZ18C20	"	2000
RZ20A20	"	1600
RZ21A20	"	1900
RZ22A20	"	2000

9. SPECIAL TOOL : None required.

10. WEIGHT AND BALANCE : The weight and balance change resulting from this modification is as follows:

	<u>Wt.</u>	<u>Sta.</u>	<u>Mo.</u>
200-344231-001 (BRACKET)	105	1755	184275
ASE-100-F (AMP)	460	1777.6	817696
HS-C2B (RELAY)	40	1708.5	68340
5-BY-5-F (HEAD SET)	400	2550	1020000
(CLAMP, SCREW etc.)	182	1800	32760
	1187		2417911

$$STA = \frac{\sum Mo.}{\sum Wt.} \doteq 2037$$

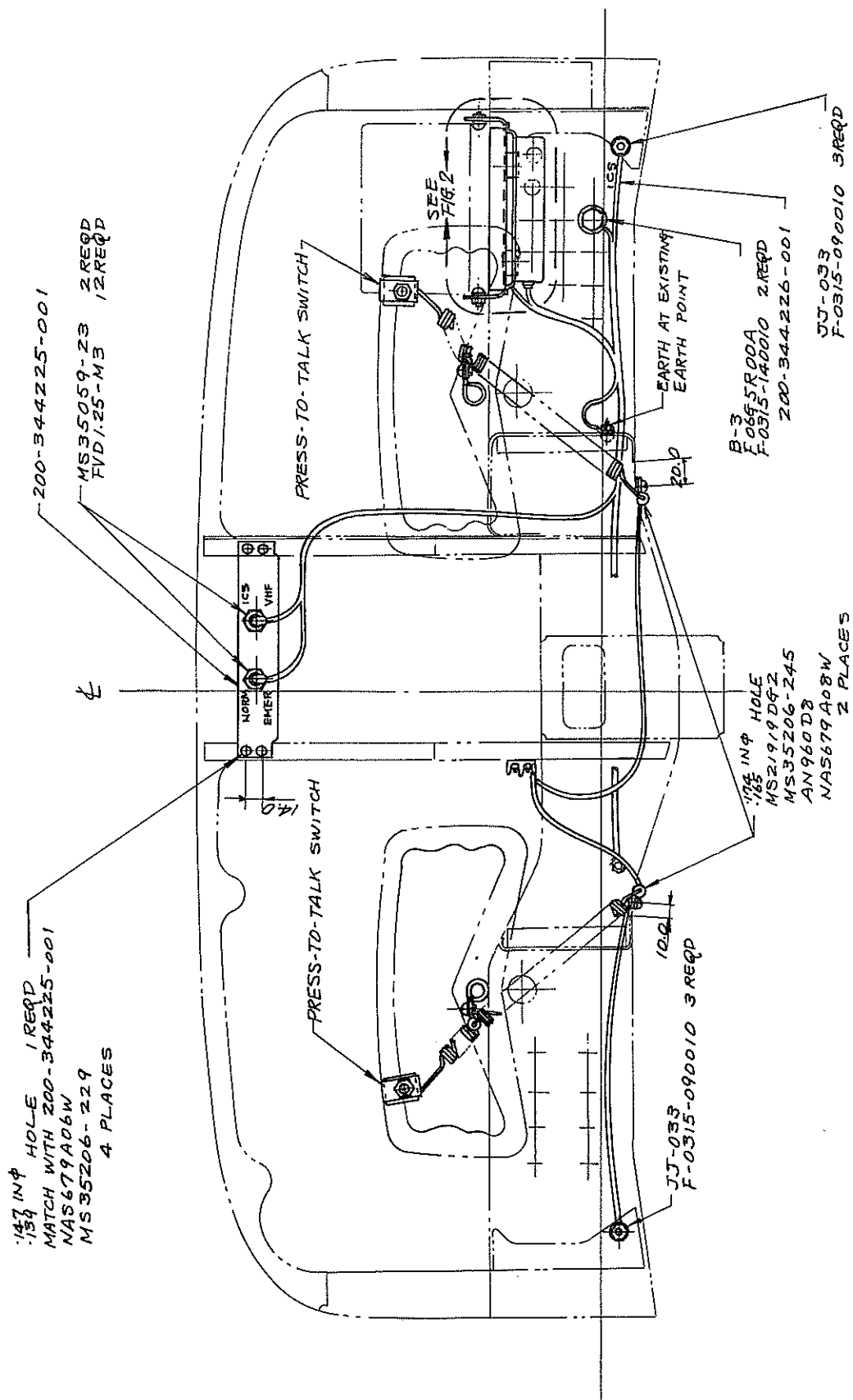
(Reference: STA \doteq 2406 when rear seat head set used.)

11. REFERENCE : None.

12. MANHOUR REQUIRED : 30 manhours required.

13. DETAILED INSTRUCTION:

- (1) Remove auxiliary fuse box from instrument panel, and after installing nutplates, reinstall the box on instrument panel. (See Fig. 2.)
- (2) Install ICS AMP, 200-383400-001, and two relays, 200-383401-001, on bracket, 200-344231-001. (See Fig. 2.)
- (3) Install bracket, 200-344231-001, on auxiliary fuse box. (See Fig. 2.)
- (4) Install bracket, 200-344225-001, above instrument panel radio rack as shown in Fig. 1.
- (5) Install two switches, MS35059-23, on the above bracket as illustrated in Fig. 1.
- (6) Install terminal block on structure behind instrument panel as shown in Fig. 3.
- (7) Install fuse holder on instrument lower panel as shown in Fig. 1.
- (8) Two jacks, JJ-034, are installed on the lower panel, one is located at the left and the other at the right. Replace these existing parts with jacks, JJ-033.
- (9) Connect electric system of wiring in accordance with Fig. 6, Wiring Diagram.
- (10) Install press-to-talk switch on each steering wheel, and lead wiring to terminal block. (See Fig. 1 and 4)
- (11) Insert headsets, BCW-10-F, in left and right jacks.
- (12) Check for proper wiring.



.147 IN ϕ HOLE 1 RECD
 MATCH WITH 200-344225-001
 NAS679A08W
 MS35206-229
 4 PLACES

200-344225-001
 MS35059-23 2 REQD
 FVD1-25-M3 12 REQD

PRESS-TO-TALK SWITCH

PRESS-TO-TALK SWITCH

SEE FIG 2

JJ-033
 F-0315-090010 3 REQD

.178 IN ϕ HOLE
 .185
 MS21919 D8-2
 MS35206-245
 AN960D8
 NAS679A08W
 2 PLACES

EARTH AT EXISTING
 EARTH POINT
 20.0
 B-3
 F-0315-140010 2 REQD
 200-344226-001

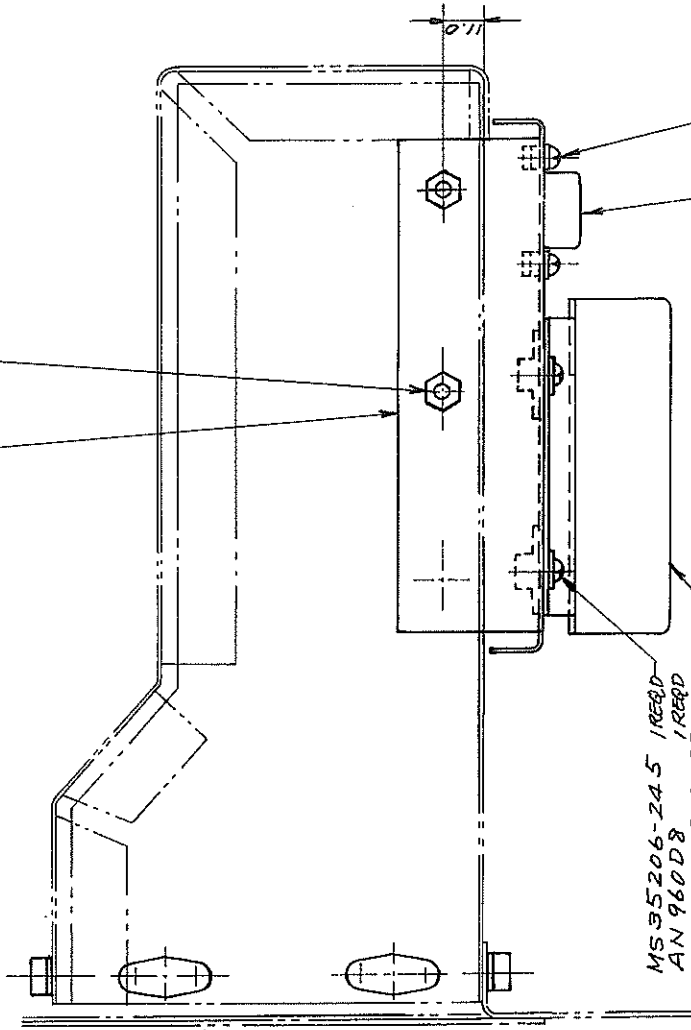
JJ-033
 F-0315-090010 3 REQD

FIG. 1 SWITCH AND FUSE INSTALLATION

NAS 680A06 1 REQD
 MS35206-230 1 REQD
 AN960D6 1 REQD
 (REMOVE A6195-6Z AND
 MS24421-18)

.178 IN ϕ HOLE
 (.188 MATCH WITH
 200-344231-001)
 MS35206-246 1 REQD
 NAS679AD8W 1 REQD
 AN960D8 1 REQD
 6 PLACES

200-344231-001



MS35206-245 1 REQD
 AN960D8 1 REQD
 4 PLACES

200-383401-001 1 REQD
 F-0315-120010 8 REQD
 (INSTALL OVER TERMINAL
 SOLDER JOINTS)
 2 PLACES

200-383400-001
 F-0315-070019 6 REQD
 (INSTALL OVER PLUG
 SOLDER JOINTS)

MS35206-217 2 REQD
 AN960D4 2 REQD
 NAS679AF4W 2 REQD
 2 PLACES

FIG. 2 ICS AMP AND RELAY INSTALLATION

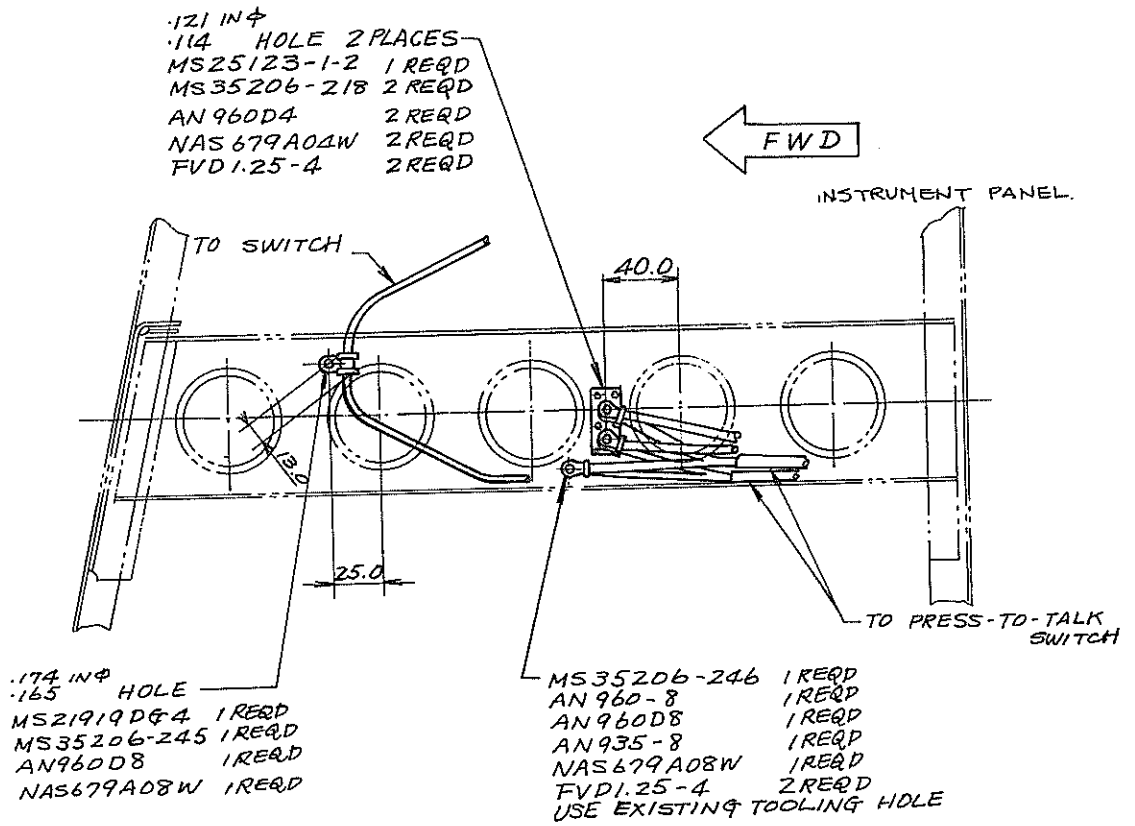


FIG 3 TERMINAL BLOCK INSTALLATION

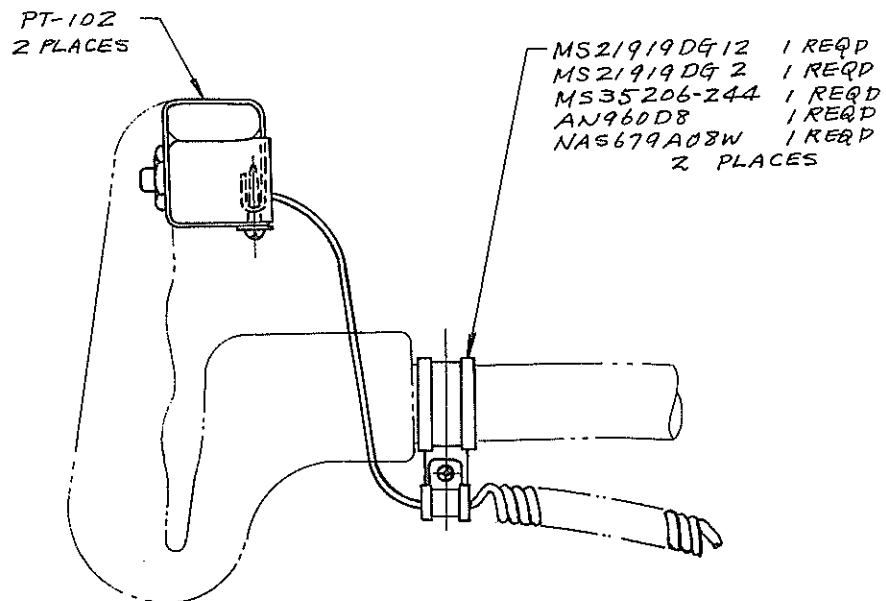


FIG.4 PRESS-TO-TALK SWITCH INSTALLATION

NOTE: REAR SEAT WIRING MAY BE INSTALLED AS OPTIONAL EQUIPMENT

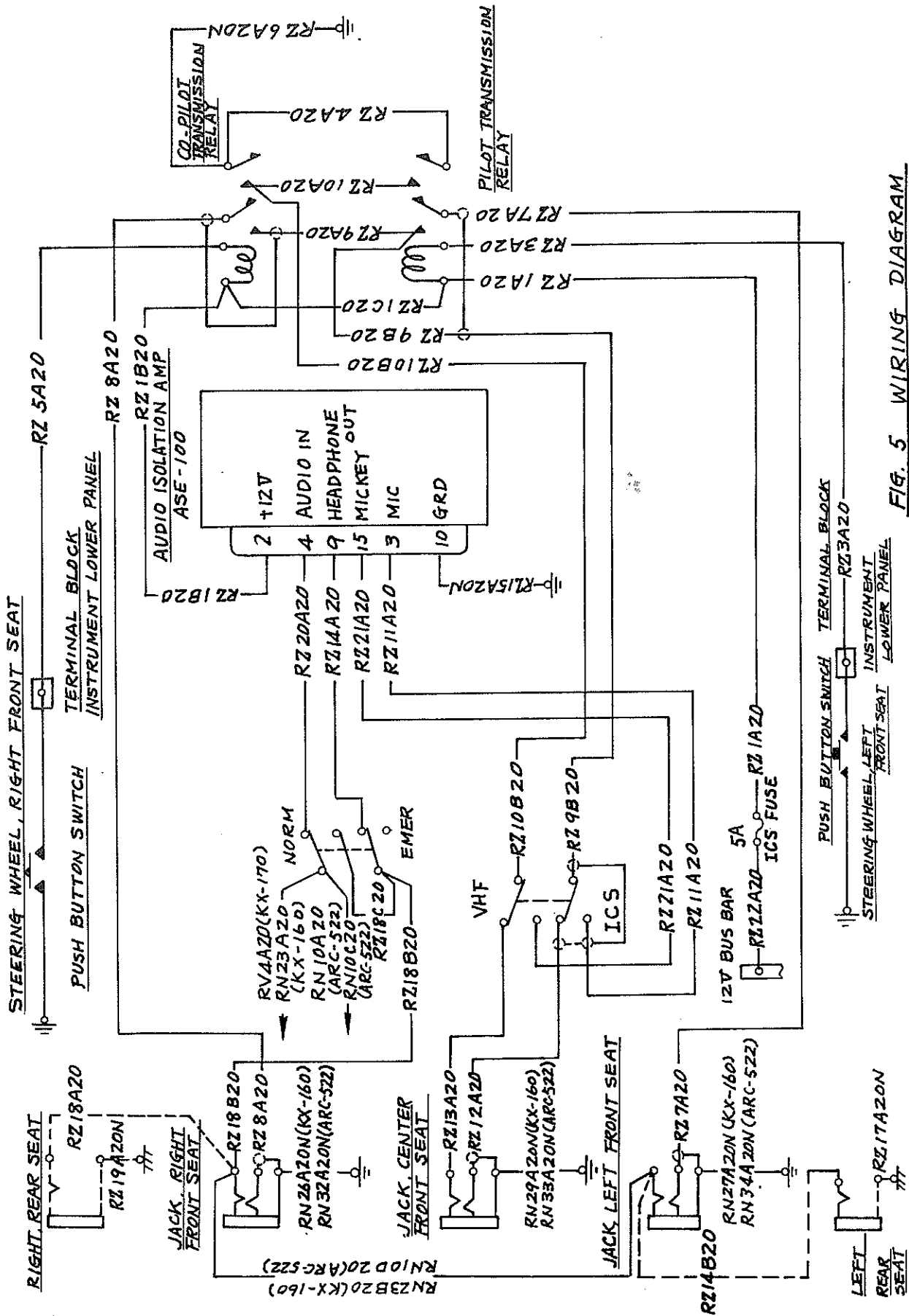


FIG. 5 WIRING DIAGRAM