



SERVICE BULLETIN

FUJI HEAVY INDUSTRIES LTD.

HEAD OFFICE

: SUBARU BLDG,
SHINJUKU, TOKYO, JAPAN

NO : FAS-059

DATE : July 20, 1971

1. SUBJECT : Torque Value Change for Main Landing Gear Attaching Bolts.
2. AIRCRAFT AFFECTED: FA-200 Series, Serial Nos. 12 thru 131.
3. PRIORITY : Essential.
4. REASON : To improve reliability of the main landing gears.
5. DESCRIPTION : Change torque value for the main landing gear attaching bolts. Revise the affected pages of Service Manual. (Refer to para. 13-(3) of this Service Bulletin.)
6. ACCOMPLISHMENT : At the first periodic check after receipt of this bulletin.
7. APPROVAL : JCAB Approval (NO-TOKYO-028) June 28, 1971
8. PARTS REQUIRED : The following parts are required to comply with this publication. (Hardware may be reused except for cotter pins.)

PART NO.	PART NAME	QTY
AN960D916L	WASHER	4
MS24665-355	COTTER PIN	4
9. SPECIAL TOOL : None required.
10. WEIGHT AND BALANCE: Negligible.

FAS - 059

PAGE 1 OF 3

11. REFERENCE : Not applicable.
12. MANHOUR REQUIRED : 1.5 manhours required.
13. DETAILED INSTRUCTION:

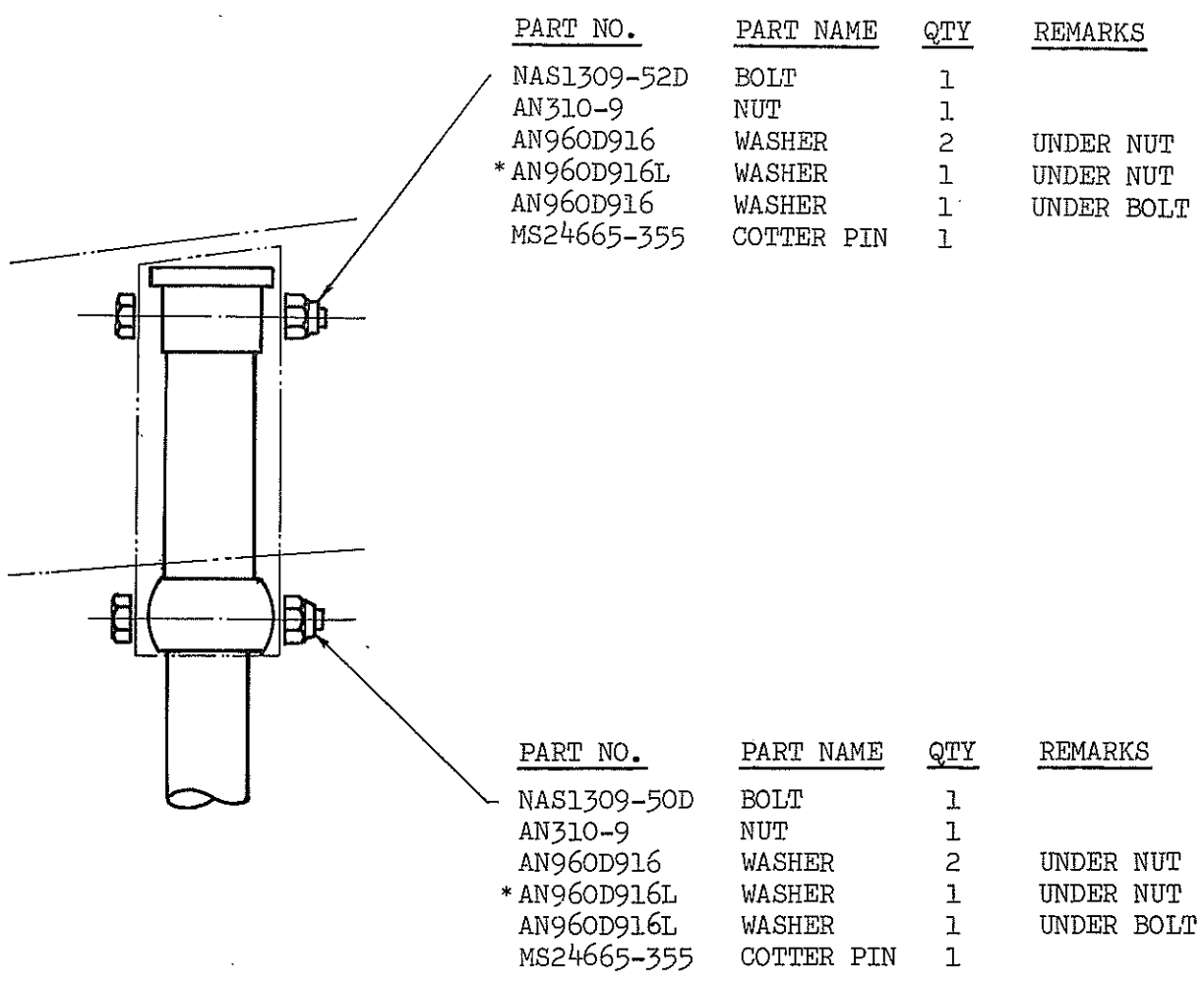
- (1) Raise the airplane in accordance with Service Manual, para. 2-2 (1).
- (2) Remove the two access covers for main landing gear attaching bolts. (No. 17 and 18 covers shown in figure 3-5, Service Manual.)
- (3) Loosen the main landing gear attaching bolts, and re-torque the bolts to 150 to 250 inch-pounds.

NOTE

The above torque value before revision was 300 \pm 50 in-lbs.
It is requested that the following affected pages of Service Manual be revised accordingly.

Page 1-9, Table 1-3 Torque Value for Specified Locations.
Page 9-3, Para. 9-3-2 (2) Installation of Main Landing Gear.

- (4) If play exists after tightening, place one washer, AN960D916L, under the nut for adjustment.
- (5) After checking for proper torque, secure the nut with cotter pin.
- (6) Install the removed access covers.
- (7) Lower the airplane and remove the jacks.



- Notes: 1. No play is permitted at a torque of 150 inch-pounds (approx).
 2.*Marked washer to be used for adjustment.

Figure 1